



**Giving  
USA™**

Shared intelligence.  
For the greater good.

# Highlights

An overview of giving in 2017\*

**Total 2017 contributions: \$410.02 billion**

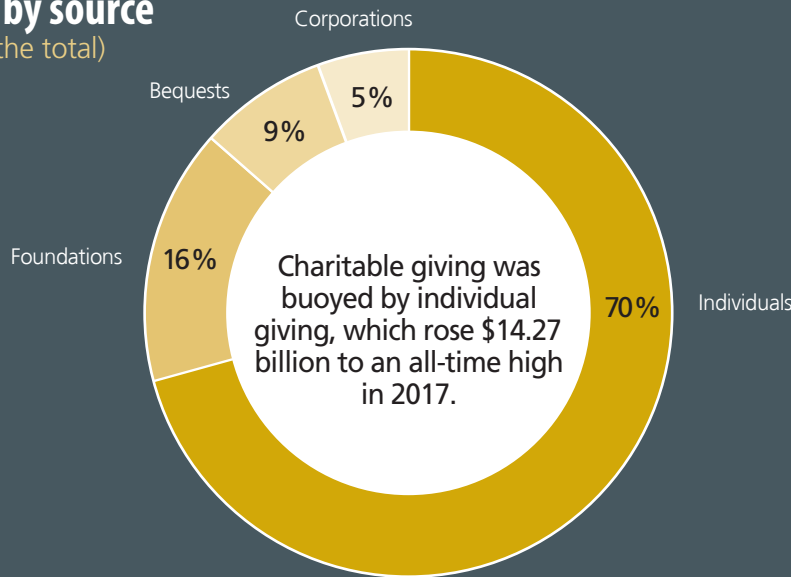
**+5.2%**

**Total estimated U.S. charitable giving**

increased by 5.2 percent, to \$410.02 billion, in 2017

## Contributions by source

(by percentage of the total)



**+5.2%**

**Giving by Individuals**

is estimated to have increased by 5.2 percent.

**+6.0%**

**Giving by Foundations**

is estimated to have increased by 6.0 percent.

**+2.3%**

**Giving by Bequest**

is estimated to have increased by 2.3 percent.

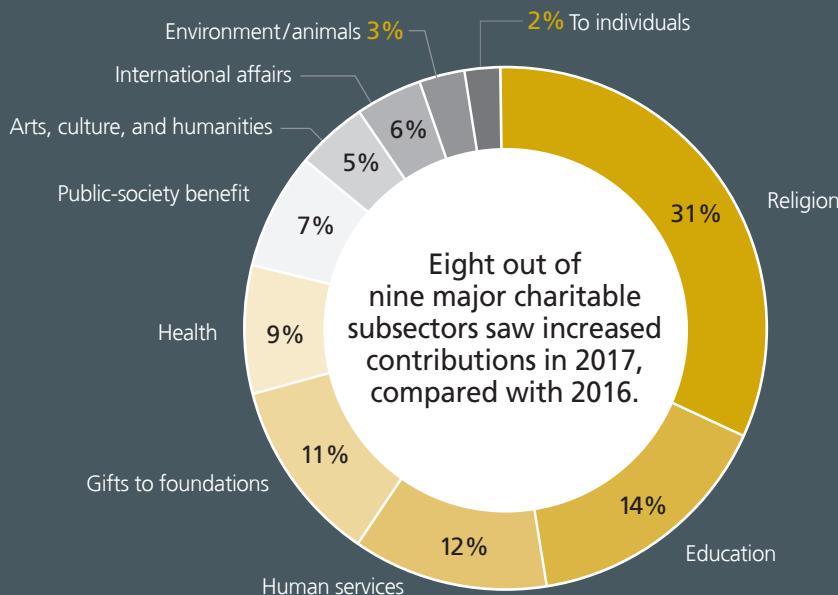
**+8.0%**

**Giving by Corporations**

is estimated to have increased by 8.0 percent.

## Contributions by recipient category

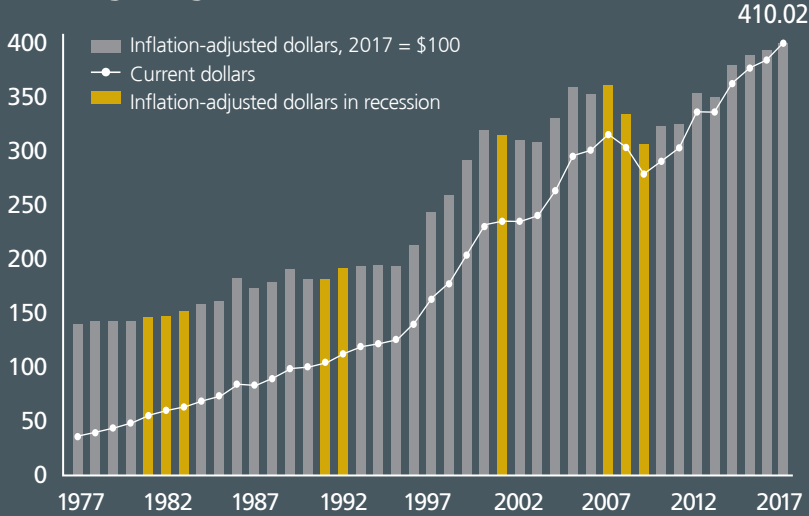
(by percentage of the total)



\* All figures on this page are in current dollars.

# An overview of giving in 2017

## Total giving, 1977–2017 (in billions of dollars)

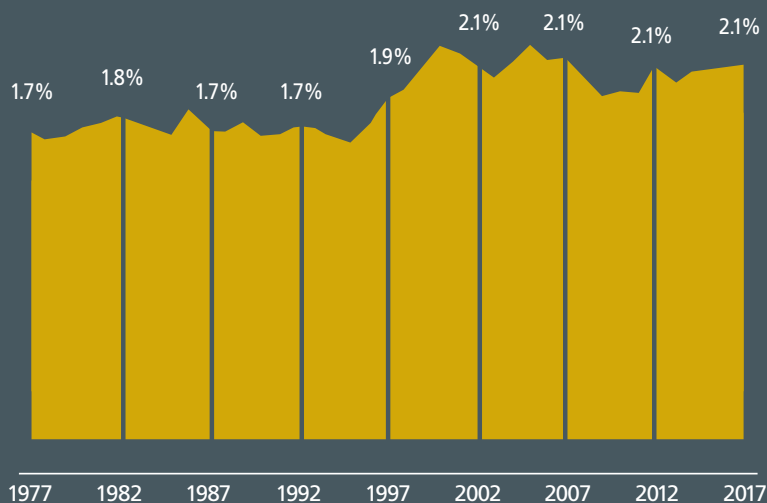


- Total giving rose 5.2 percent in current dollars in 2017, or 3.0 percent adjusted for inflation.
- Between 2007 and 2017, total giving increased by \$98.96 billion in current dollars, or \$42.29 billion in inflation-adjusted dollars.
- Total estimated giving reached its highest levels ever in 2016 and 2017 (in current and inflation-adjusted dollars).

Refer to the Numbers section in the annual report for a complete review of 2017 total giving trends.

## Total giving as a percentage of GDP: 1977–2017

(in inflation-adjusted dollars, 2017 = \$100)



- Gross Domestic Product (GDP) reflects the economic health of a nation.
- GDP increased in inflation-adjusted dollars by 1.9 percent between 2016 and 2017. This rate of change is compared with inflation-adjusted growth in total giving of 3.0 percent. Total giving as a percentage of GDP was 2.1 percent in 2017.

Refer to the Numbers section in the annual report for a complete review of 2017 total giving as a percentage of GDP trends.

## 2017 giving trends

- In 2017, all four sources of charitable giving increased. Additionally, eight out of nine major charitable subsectors realized growth in giving.
- Led by the S&P 500, key economic indicators, including gross domestic product (GDP) and personal consumption, posted strong growth in 2017.

Refer to the Numbers section and chapters in the annual report for a complete review of how changes in the economic environment affected different aspects of giving in 2017.

## Key factors related to the rise in giving by individuals in 2017\*

- In 2017, per capita giving by U.S. adults reached \$1,165, and average U.S. household giving reached \$2,271.
- For the year 2017, it is estimated that giving by non-itemizing individuals grew 3.3 percent and giving by itemizing individuals grew 5.6 percent.

Refer to the Numbers section in the annual report for an overview of 2017 individual giving trends, as well as the chapter on giving by individuals.

## Key factors related to the increase in giving by corporations in 2017\*

- Corporate pre-tax profits rose 4.1 percent, and GDP increased 4.1 percent in 2017. Both of these factors influenced the 8.0 percent rise in corporate giving in 2017.
- Corporate giving as a percentage of corporate pre-tax profits was at 0.9 percent in 2017.

Refer to the Numbers section in the annual report for an overview of 2017 corporate giving trends, as well as the chapter on giving by corporations.

## Key facts about giving to particular recipient types in 2017\*

- Giving to public-society benefit increased for the eighth consecutive year, while giving to religion and giving to arts, culture, and humanities increased for the seventh and sixth consecutive years, respectively.
- Giving to foundations saw the largest increase, at 15.5 percent. This subsector also posted the strongest two-year growth rate.
- For the years 2013–2017, health was the fastest growing subsector in terms of contributions received, followed by international affairs.
- Giving to environment/animals, education, and human services realized stronger growth in 2017 compared with the previous year, rising 7.2 percent, 6.2 percent, and 5.1 percent respectively.

Refer to the Numbers section in the annual report for overviews of 2017 giving by recipient type, as well as the chapters on giving to specific recipient types.

\* In current dollars.

Order *Giving USA 2018* today by going to [www.GivingUSA.org](http://www.GivingUSA.org).

For just \$119.95 you will receive:

- The complete *Giving USA 2018* report in paperback, as well as an immediately downloadable electronic copy.
- The *Giving USA 2018* Graph Pack, which is a selection of *Giving USA*'s most popular graphs in PowerPoint format. These graphs can be used in the purchaser's own presentations. (Valued at \$49.95!)



## Supporters

### Platinum (\$25,000+)

CCS Fundraising  
DonorPerfect

### Patron (\$10,000–\$24,999)

Blackbaud  
Campbell & Company  
Dunham+Company\*  
Graham Pelton Consulting, Inc.

Grenzebach Glier and Associates  
Marts & Lundy  
Schwab Charitable Philanthropy Fund

### Benefactor (\$5,000–\$9,999)

The Alford Group  
Bentz Whaley Flessner  
Community Brands\*

The Curtis Group  
Jeffrey Byrne + Associates, Inc.

### Partner (\$2,500–\$4,999)

Alexander Haas  
Alexander Macnab & Company  
Aly Sterling Philanthropy  
Beazley Foundation  
Benefactor Group  
Cramer & Associates  
Dini Spheris

Johnson, Grossnickle & Associates  
Kellogg Organization, Inc.  
The Phoenix Philanthropy Group  
Richner & Richner, LLC  
Ruotolo Associates, Inc.  
Westfall Gold

### Builder (\$1,000–\$2,499)

Arthur Alley Associated  
Association for Healthcare Philanthropy  
Benevon  
Maree G. Bullock in Recognition of Jimmie R. Alford  
Carlson Fund Raising, LLC  
Carlton & Company  
DonorSearch

Heaton Smith Group  
Joyaux Associates  
KCI-Ketchum Canada, Inc.  
The Lapin Group, LLC  
Christopher Looney  
Margaret and Tom Mesaros  
QGiv  
TrueSense Marketing  
The Yunker Group, Inc.

### Friend (\$100–\$999)

Arnault & Associates, Inc.  
Brenda Asare  
Josh Birkholz  
ClearView CRM  
Evans Consulting Group LLC  
Falk Consulting LLC  
Giving Tech Labs  
Global Advancement, LLC  
Green Oak Consulting Group  
Wendy Hatch  
The Hodge Group  
Angela Hodson  
Mary Kaufman-Cranney  
Diane Knoepke  
Jay and Christie Love  
Laura MacDonald, CFRE  
Sandy Macnab, FAHP, CFRE

Wendy McGrady  
The Monument Group  
M. Anne Murphy  
NeonCRM  
Jamie Phillippe  
Prasad Consulting & Research  
Karen Rotko-Wynn  
Sentergroup, Inc.  
David & Patricia Shufflebarger  
Aggie Sweeney, CFRE  
Bill Tedesco  
Sharon Tiknis  
Virgil Scott Consulting, Inc.  
Winkler Group  
Ryan Woroniecki

\*Contribution includes an amount for in-kind services

## Table of Contents for *Giving USA 2018*

Acknowledgments	13
Foreword	17
What <i>Giving USA</i> Can Do For You	19
Infographic: Total Estimated 2017 Giving	22

### GIVING USA ESTIMATES

1 Key Findings	25
2 The Numbers	29

### SPECIAL SECTION

3 Disaster Giving	73
-------------------	----

### SOURCES OF CONTRIBUTIONS

4 Giving by Individuals	83
5 Giving by Foundations	109
6 Giving by Bequest	133
7 Giving by Corporations	147

### USES OF CONTRIBUTIONS

Introduction to the <i>Giving USA</i> Uses of Contributions Chapters	167
8 Summary of the National Taxonomy of Exempt Entities (NTEE)	169
9 Giving to Religion	173
10 Giving to Education	187
11 Giving to Human Services	225
12 Giving to Foundations	243
13 Giving to Health	255
14 Giving to Public-Society Benefit	275
15 Giving to Arts, Culture, and Humanities	307
16 Giving to International Affairs	333
17 Giving to Environment/Animals	355

### GIVING DATA

18 Data Tables for Charts in The Numbers	371
--	-----

### METHODOLOGY

19 Brief Summary of Methods Used	381
20 Glossary	401
21 Sources of Philanthropic Information	405

The Giving Institute and the Giving USA Foundation™	413
Committees, Advisory Council, and Staff	414
Professional Code of Ethics	424
Standards of Practice	425